

103-1

Designer Shannon Dennis demonstrates top stitch basics by sewing a laptop sleeve.

Watch the video for this project online at:
http://youtu.be/y4Dx_FPZmUY



Topstitch Laptop Sleeve

By Shannon Dennis

This stylish laptop sleeve will give your nerdy side some style. So simple you can make a few for gifts too! Directions below are for a 15" laptop sleeve but can easily be altered to fit your laptop. See the chart below for cutting measurements for a 13" or 17" laptop sleeve.

Supplies:

Coats & Clark Heavy XP Thread in cream
Coats & Clark Dual Duty All-Purpose thread
Rotary cutting tools – rotary mat, rotary cutter, ruler
Iron
Marking pen
Pins

View A Fabric:

1 yard of brown home décor fabric
1/4 yard of green home décor fabric
1/4 yard of gray home décor fabric

View B Fabric:

1 yard of Ty Pennington fabric in Spice
1/4 yard of brown home décor fabric

Cutting for View A:

From the brown cut 2 pieces 17 1/2" x 28"
From the green cut 1 piece 5 1/2" x 8 1/2"
From the gray cut 1 piece 5 1/2" x 9 1/2"

Cutting for View B:

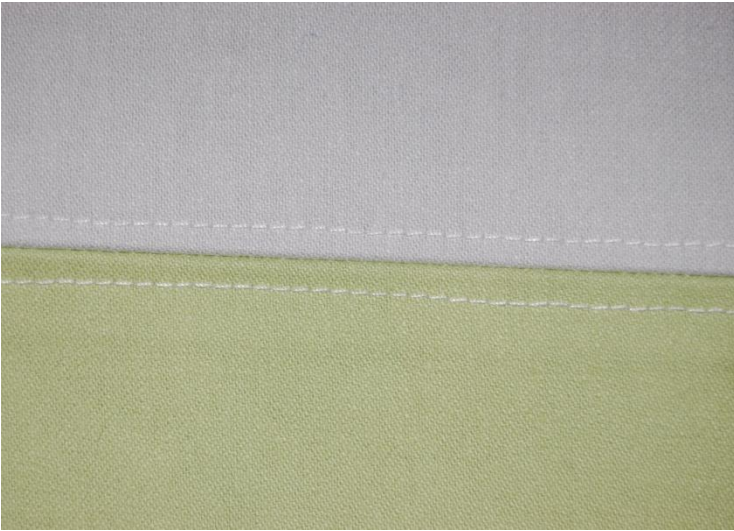
From the Spice fabric cut 2 pieces 17 1/2" x 28"
From the brown cut 1 piece 5 1/2" x 17 1/2"
From the brown cut 1 piece 7" x 17 1/2"

Sewing Instructions: View A

*Seam allowance is 1/4" unless otherwise noted.

- 1.) With right sides together, sew the green and gray strips together to create one strip 5 1/2" x 17 1/2". Press the seam open and topstitch 1/4" away from the seam on each side.

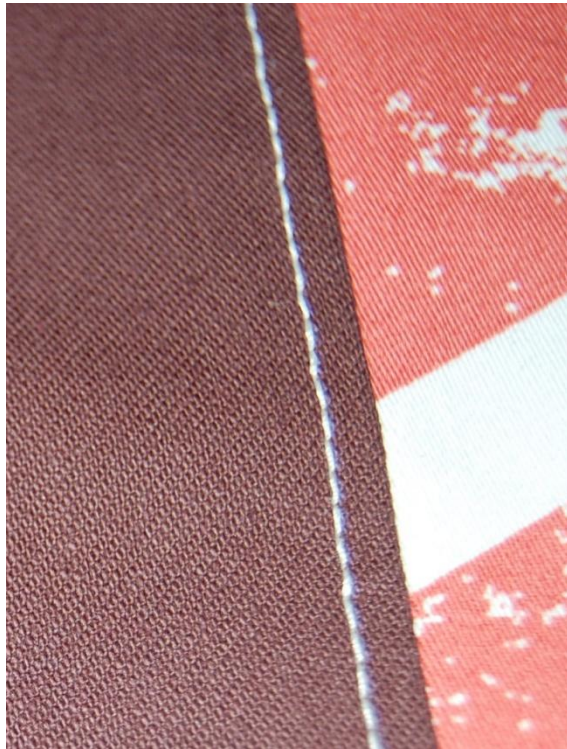
- 2.) On the right side of one brown strip, measure 6" from the end and draw a line with your marking pen. Place the decorative strip on top of the laptop base right sides together matching the edge of the decorative strip to the line. Sew the decorative strip onto the laptop base.
- 3.) Press the decorative strip up toward the seam. Topstitch to hold in place. Turn the remaining edge of the decorative strip under 1/4" and pin in place onto the laptop base. Topstitch in place.



Sewing Instructions: View B

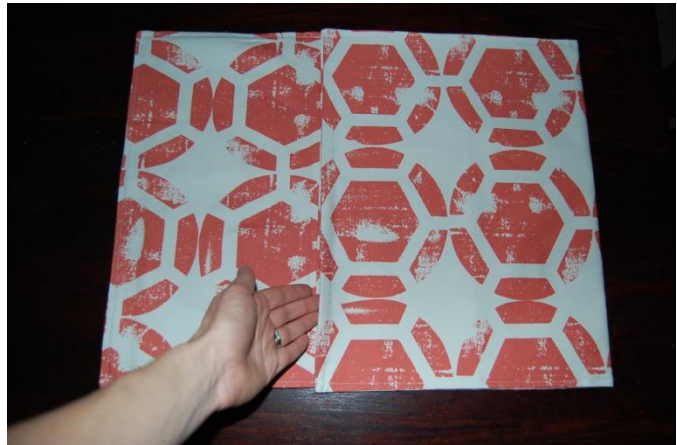
Seam allowance is 1/4" unless otherwise noted.

- 1.) Press under 1/4" on both long sides of the 5 1/2" brown decorative strip.
- 2.) On the right side of one spice strip, measure 6" from the end and draw a line with your marking pen. Place the decorative strip along this line on the right side of the laptop sleeve. Pin in place.
- 3.) Topstitch to hold in place. Turn the remaining edge of the decorative strip under 1/4" and pin in place onto the laptop base. Topstitch in place.
- 4.) On the 7" brown strip, turn under 1/2" along both long edges. Topstitch one edge 1/4" away from the finished edge then topstitch a second row 1/2" away from the finished edge. This is the top edge of your pocket.
- 4.) On the right side of the remaining spice strip measure 14 1/4" from the end and draw a line with your marking pen. Place the decorative strip on the right side of the lining matching the bottom edge of the decorative strip to the line. Topstitch the bottom of the pocket in place. Baste the sides of the pocket to the lining



To finish both Views:

- 5.) Pin the laptop base and the lining, right sides together. Sew around the laptop sleeve leaving a 4" opening along one of the sides.
- 6.) Clip the corners and turn the laptop sleeve right side out through the opening. Press well with your iron.
- 7.) Fold the bottom of the sleeve up 10" and pin in place. Starting at the bottom of the sleeve topstitch 1/2" around the sleeve keeping the flap (the part with the decorative strip) separate from the body of the sleeve.



13" Sleeve

View A

View B

Decorative	5 1/2" x 7"	5 1/2" x 16"
	5 1/2" x 10"	
Lining	16" x 33"	16" x 33"
Body	16" x 33"	16" x 33"

Fold Up	Fold up 12" to create the laptop pouch	
17" Sleeve	View A	View B
Decorative	5 ½" x 11 ½"	5 ½" x 20"
	5 ½" x 9 ½"	
Lining	20" x 34"	20" x 34"
Body	20" x 34"	20" x 34"
Fold Up	Fold up 16" to create the laptop pouch	

For more information about Shannon Dennis visit www.theninaline.com

Partners



<http://www.brothersews.com>

Copyright © 2011 It's Sew Easy, All Rights Reserved.