



# Series 100

[www.itsseweasytv.com](http://www.itsseweasytv.com)

**112-1**

Colbey Decker uses menswear fabrics and grommets to create a unique iPad cover.

Watch the video for this project online at:  
<http://youtu.be/zetFmg9J0JI>



Make Your Day  
designs

## Men's iPad Sleeve



### About

Welcome to Make Your Day Designs. This company is my pride, my joy, and most of all my passion. I started designing because I wanted to create clean, sophisticated lines. I have taken my passion and translated it into my personal mission, to create beautiful products that will hopefully make your day.

*Colbey Decker*

### Tech Specs

For this pattern you will need:

- 1 Yard Interior/Exterior/Tie Fabric
- ¾ Yard Peltex 72 F Stabilizer
- 2 1" Heavy Duty 7/16" Tam Grommets/Eyelets
- ¼" Seams
- Finished Dimensions 10 ½" x 8 ½"

# One

*Prep:*

Read all instructions to make sure you understand how the pattern will flow.



# Two

*Cut Exterior and Tie Fabric:*

- a.) Cut one piece 25  $\frac{3}{4}$ " deep x 9" wide
- b.) Cut one piece 2" deep x 44" wide ( or width of fabric)

# Three

*Cut Interior Fabric:*

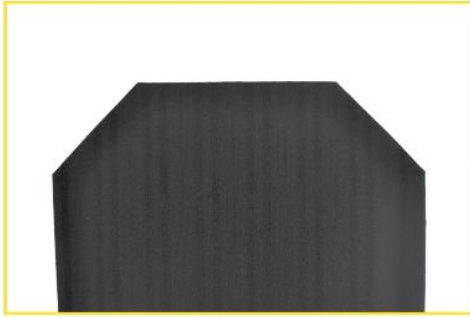
- a.) Cut one piece 25  $\frac{3}{4}$ " deep x 9" wide

# Four

*Cut Stabilizer:*

- a.) Cut one piece 24  $\frac{7}{8}$ " deep x 8  $\frac{3}{8}$ " wide





## Six

### Shape Flap Detail-Stabilizer:

- a.) Place exterior fabric measuring  $24 \frac{7}{8}$ " x  $8 \frac{3}{8}$ " on a flat surface right side up with flap away from you
- b.) Starting at the top left corner/flap corner measure 2" toward bottom/center and mark (A)
- c.) Starting at the top right corner/flap corner measure 2" toward bottom/center and mark (Y)
- d.) Starting at the top left corner/flap corner measure 2" toward right/center and mark (B)
- e.) Starting at the top right corner/flap corner measure 2" toward left/center and mark (Z)
- f.) Draw a straight line connecting points (A) and (B)
- g.) Cut along line, this gives the flap its shape
- h.) Repeat with (Y) to (Z)

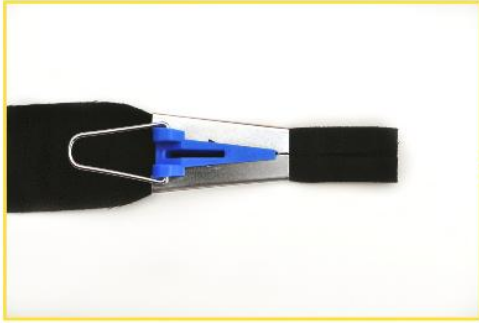
## Five

### Shape Flap Detail:

- a.) Place exterior fabric measuring  $25 \frac{3}{4}$ " x 9" on a flat surface right side up with flap away from you
- b.) Starting at the top left corner/flap corner measure  $2 \frac{1}{8}$ " toward bottom/center and mark (A)
- c.) Starting at the top right corner/flap corner measure  $2 \frac{1}{8}$ " toward bottom/center and mark (Y)
- d.) Starting at the top left corner/flap corner measure  $2 \frac{1}{8}$ " toward right/center and mark (B)
- e.) Starting at the top right corner/flap corner measure  $2 \frac{1}{8}$ " toward left/center and mark (Z)
- f.) Draw a straight line connecting points (A) and (B)
- g.) Cut along line, this gives the flap its shape
- h.) Repeat with (Y) to (Z)
- i.) Repeat on interior panel



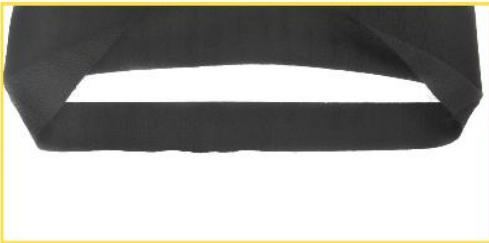




## Eight

*Sew Sides:*

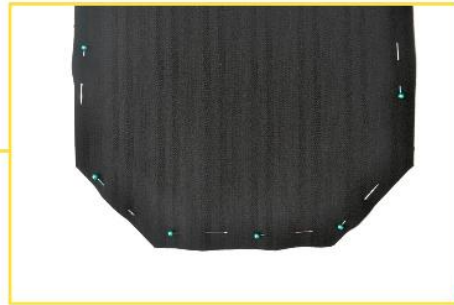
- Place exterior fabric on a flat surface with right side up
- Place interior fabric on top of exterior fabric with right side down
- Pin along three sides leaving bottom/non-flap side unpinned
- Sew along three sides using  $\frac{1}{4}$ " seam
- Trim corners
- Flip fabric right side out



## Seven

*Make Tie (Without Tape-Maker):*

- Place tie fabric measuring 2" x 44" on a flat surface
- With the wrong side up, fold each 44" edge  $\frac{1}{2}$ " toward the center
- Press
- Fold in half, so tie now measures  $\frac{1}{2}$ " wide
- Tuck the  $\frac{1}{2}$ " ends under to hide the raw edge and press in place
- Secure by using an edge stitch



## Nine

*Assemble:*

- Insert stabilizer
- Press to secure
- Take the open exterior fabric and fold  $\frac{1}{2}$ " towards wrong side/interior and finger press the end in on itself
- Press
- Repeat with open interior fabric
- Secure using  $\frac{1}{4}$ " seam

# Ten

## Add Grommets:

- a.) Starting at the bottom/non-flap left corner measure 18  $\frac{3}{4}$ " towards flap and mark with a pin (A)
- b.) Starting at the bottom/non-flap right corner measure 18  $\frac{3}{4}$ " towards flap and mark with a pin (B)
- c.) From (A) measure 2  $\frac{3}{4}$ " right/towards center and mark with a pin (C)
- d.) From (B) measure 2  $\frac{3}{4}$ " left/towards center and mark with a pin (D)
- e.) Add grommets at (C) and (D)



# Eleven

## Shape:

- a.) Lay fabric flat with interior fabric right side up and flap away from you
- b.) Fold bottom/non-flap side 10  $\frac{1}{4}$ " towards top
- c.) Pin
- d.) Secure using  $\frac{1}{4}$ " seam



# Twelve

## Finishing Touches:

- a.) Weave tie through grommets and wrap around flap twice
- b.) Secure with knot in back between the two grommets
- c.) Enjoy

---

# Partners



<http://www.brothersews.com>

<http://www.voguefabricsstore.com>

Copyright © 2011 It's Sew Easy, All Rights Reserved.