

Segment Title: Classic Western Wear – Machine Embroidered Jacket

Host: Joanne Banko

www.letsgosew.com



Steps to create this jacket:

- Embroider fabric sections for front and back yoke.
- Embroider continuous border design on narrow strip for belt.
- Construct jacket and add decorative topstitching.

“When you sew you can have **what** you want, **when** you want it, **how** you want it!” This denim jacket is a perfect example of having the power in your fingertips to create custom garments with a sewing and embroidery machine. These instructions show you how to embroider a Western Style Jacket using templates for design placement on the yokes, how to stitch continuous connected designs for the coordinating belt, and use specialty stitches for unique topstitching effects. Follow along with me as I show you specific techniques and detailed instructions for use with the Brother XV8500D Dream Machine. At the end of these instructions you’ll find **options and ideas** for making this style of jacket with many other machine models. You’ll also find a link to a Free tip sheet with instructions for making your own custom covered buttons.

Are you ready? Let’s go sew!

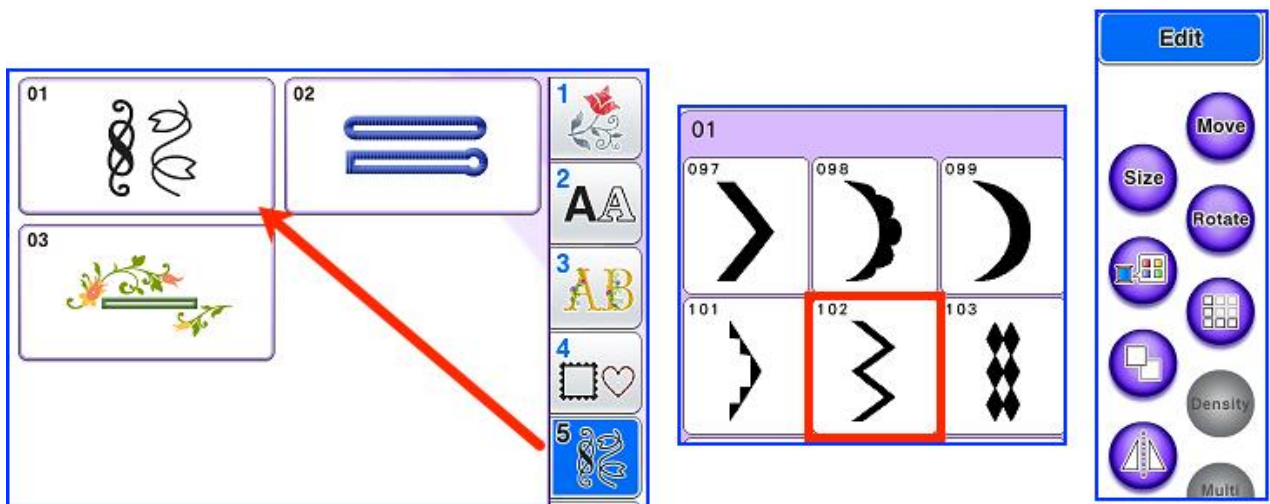
Materials and Supplies featured in this episode:

- [Brother XV8500D Sewing and Embroidery Machine](#)
- [Brother Embroidery Thread and Bobbin Thread](#)
- Brother Embroidery Hoops appropriate for your selected pattern pieces. I used the following hoops:
 - ✓ Super Large 9.5 X 14 Hoop for Back yoke
 - ✓ [SA439 5 X 7 Hoop](#) for Front yokes
 - ✓ [SABF6000D 7 X 4 Border Hoop](#) for modified belt at waistline
- [SA5810](#) Brother Medium Weight Tear-Away Stabilizer
- [Brother PE Design Software](#) for importing design files from the machine to print precise templates
- Paper or transparency medium for printing templates
- [Wrapped in Embroidery book](#) and multi-format embroidery design collection. Transfer design motifs Wrapped 08_01 (2.5” X 3”) and Wrapped 08_03 (4.59” x 6.28”) to the machine.
- Pattern tracing cloth for creating oversized rectangles for cutting yoke pieces
- [Folkwear Pattern #242 Rodeo Cowgirl Jacket](#)
- Solid fabric such as the 6 oz. (non-stretch) denim used in this example. (**Note:** Purchase additional yardage for creating oversized rectangles and testing designs).
- Interfacing for yokes and cuffs, I prefer [HTC Whisper Weft fusible interfacing](#)
- [Dritz Button Covers for creating covered buttons](#)
- [Dritz Temporary Adhesive Spray](#) or [Dritz 1/4-inch Temporary Adhesive Tape](#)

Basic Steps for Embroidering Yokes

Step 1. To create a custom design for the front and back yokes you will need to measure the size of each yoke pattern and determine the appropriate size hoop for each yoke design. Observe that the front yoke pattern calls for a bias cut. This is optional. I find that cutting on the straight grain is fine for solid fabrics. Next, use pattern-tracing cloth to create an oversized rectangle for each yoke piece. Use patterns to cut oversized fabric rectangles and apply interfacing to the wrong side of entire section. Now you are ready to create an embroidery design to fit within your pattern piece.

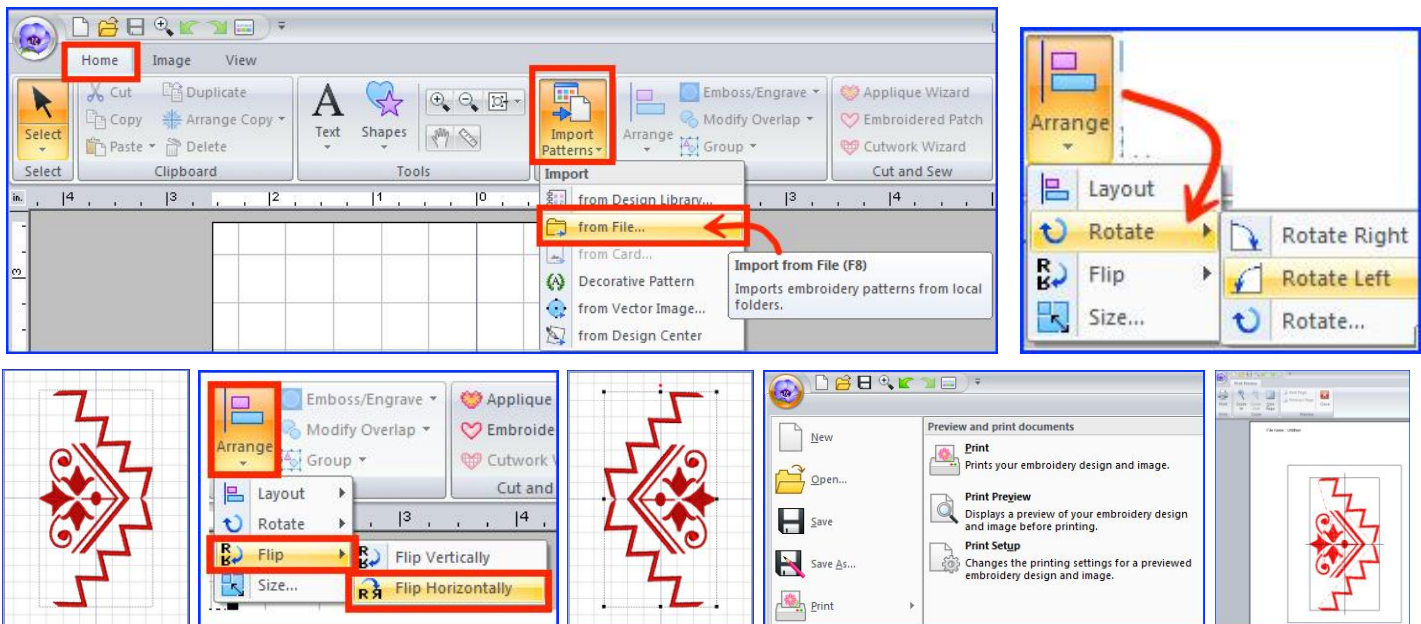
Create the featured front yoke design as follows: Select design motif Wrapped 08_01 and touch Set. Add a decorative pattern from the built in menu to accent the design along the lower edge. I used motif No.102 from the built-in Utility Embroidery pattern menu. The Edit mode on the machine allows for customizing and creating combination designs with a multitude of options. Copy, paste, rotate, re-size, mirror image, and move selected design elements as necessary to create a combination design.



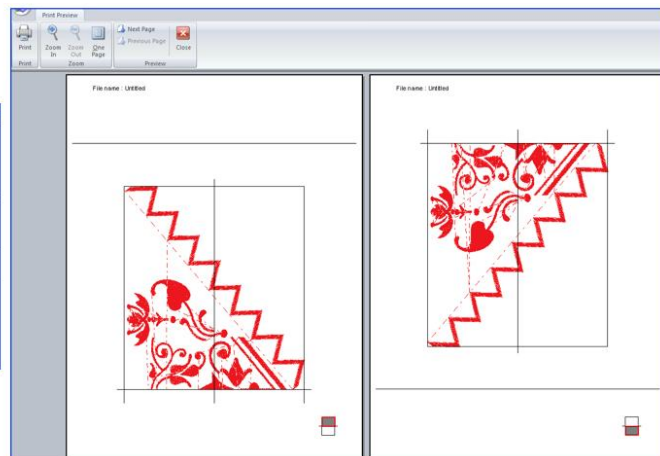
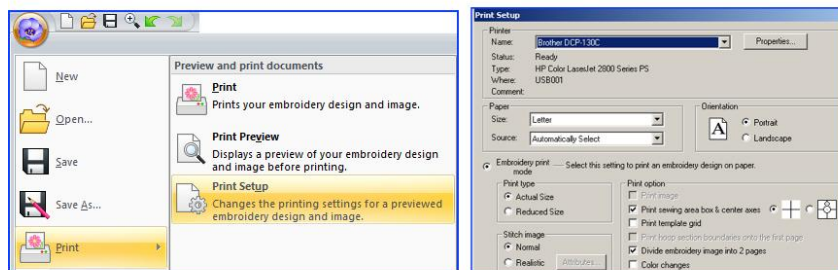
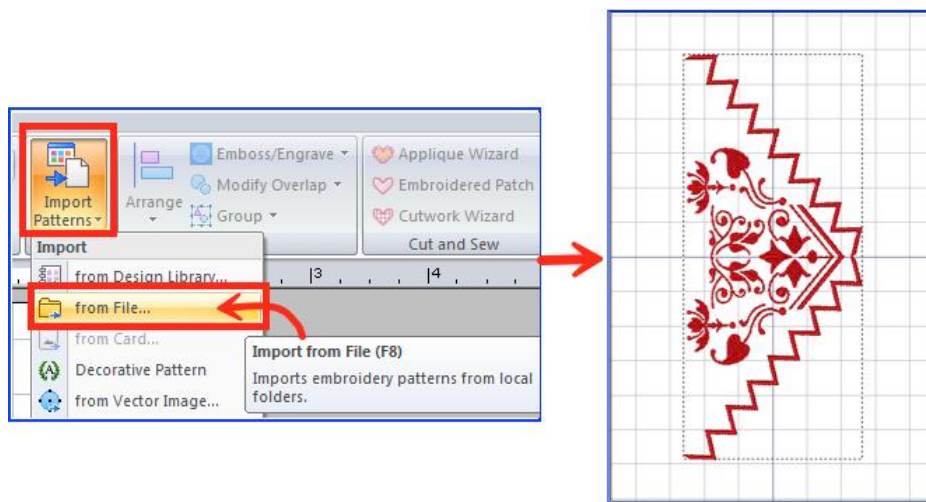
Make sure your combination design fits within the measurements of your front yoke pattern piece. My final design is slightly larger than the yoke, with part of the embroidery design stitched within the seam allowance.

Tip: I encourage you to experiment with different ideas and design combinations. Test designs with different thread colors on your selected fabric. This requires only a small investment of time and effort and the results are well worth it. Sometimes small adjustments or slight color changes can take your garment from good to great!

When you're happy with your design save it to memory and transfer to the computer. I used portable USB media to save and transfer my design. Import the design combination using PE Design software. Rotate entire selected design to embroider the combination lengthwise in the 5 X 7 hoop. Use the software to create a mirror image copy for opposite yoke and then print templates for each one. **Note:** I changed all thread colors in this example to red for better visibility. See various software options below:



Following the same method above, create the back yoke design using Wrapped 08_03, adding motifs from the built-in Utility Embroidery pattern menu for a design that fills the back yoke pattern piece. Use Brother PE Design to import back yoke design and print a template as you did for yoke fronts. You will need to print two pages for this larger size template. See software options below:



Step 2. Use a wash away marker or pencil to lightly trace pattern outlines on fabric rectangles, marking the center of each. Decide on the placement for each yoke design using your printed template as a guide.



Embroider combined designs centering designs on each oversized yoke piece, adding a layer of tear away stabilizer underneath. For a single color design touch Edit and select the icon for continuous embroidery. In addition, you can take advantage of the scanning function in the machine to position your design within the hoop, aligning the design with the marking on the fabric. See examples below:

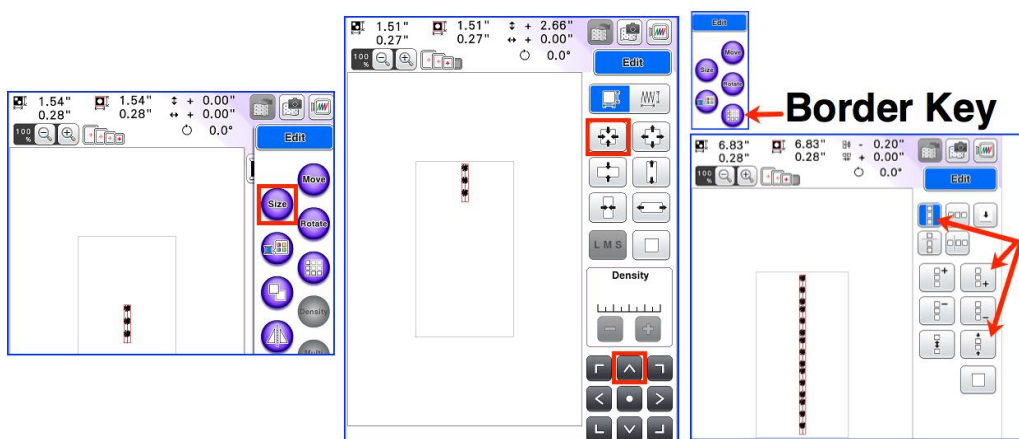


Remove from hoop, place pattern over embroidery and cut precise pieces for each yoke. Notice that I made a full size pattern for the back yoke. **Tip:** The margin of fabric in the oversized rectangle allows for adjustments when cutting your final piece.

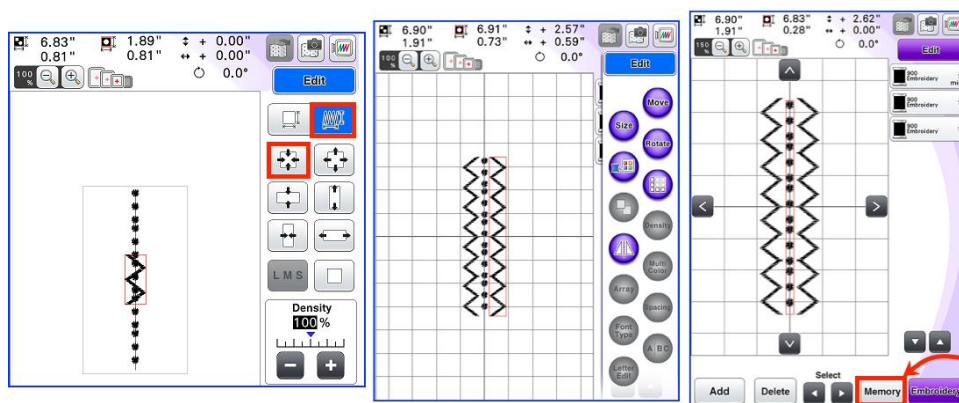


Basic Steps for Embroidering Belt:

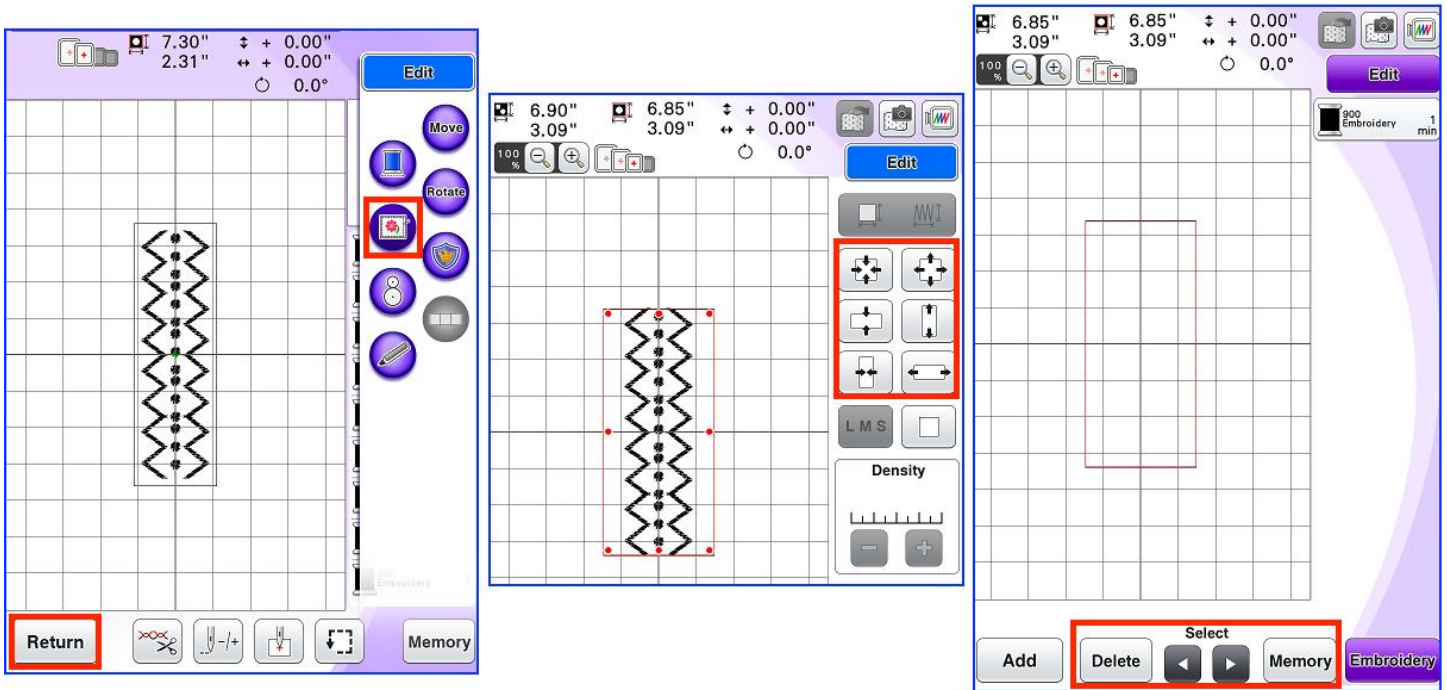
Step 1. The original belt pattern is for a tie belt. To create modified belt you'll need a strip of fabric 3-inches wide times the length needed to circle around waist, beginning and ending at front side seam. Add a few extra inches to this measurement for final adjustment to belt length. Cut one strip for embroidery and one for opposite (plain) side of belt. This 3-inch belt piece includes a ½-inch seam allowance for a belt finishing at 2-inches wide. Use the built in border function and create a repeat pattern for the belt similar to the one featured on the jacket. Several Brother model machines include this special feature. There are many ways to design and edit border style designs using the Edit mode and included features from the repeat pattern menu. Be sure to check your machine manual for complete details on creating repeat patterns with the border function.



Feel free to experiment with a variety of designs from the built-in Utility Embroidery pattern menu. For my belt design I used motif No. 077 combined with motif No.102 to coordinate with the front and back yokes. There are many Edit features you can use to customize a border design, including the ability to re-size the design while re-calculating stitches. The options in Edit mode are practically endless! Be sure to keep the final width of the design well within the size of the finished belt measurement. For design length, create a design that is slightly less than the maximum length of your selected hoop. This allows room to adjust the starting position of the design prior to stitching. Save finished border design to built-in memory.

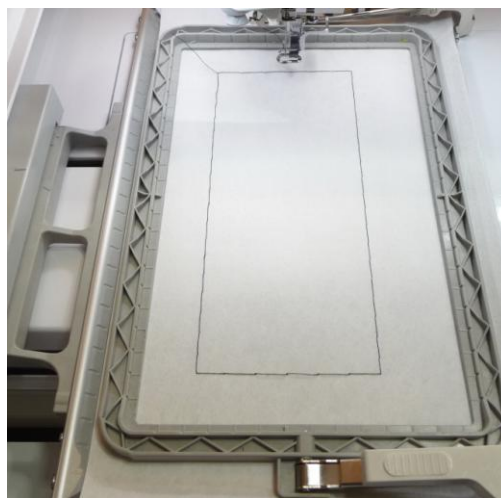
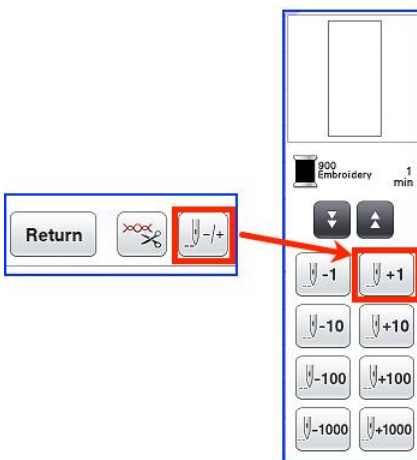


Proceed to the Embroidery screen and add a basting outline. Next, touch return and re-size the selected basting outline so it closely matches the length of the border design and measures slightly wider than the 3-inch belt piece. Touch OK. Now you will need to save the basting outline by itself. Select and delete each portion of the border design and then save the basting outline to built-in memory.

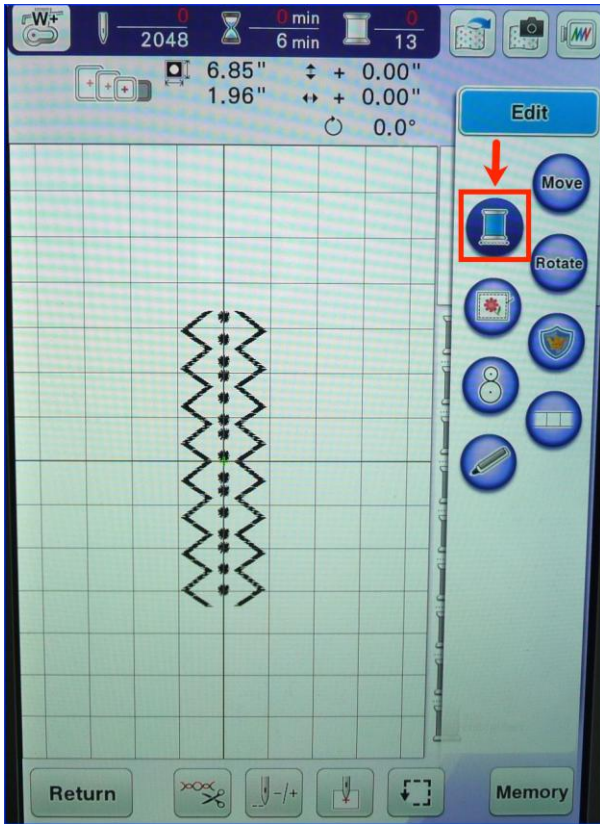


Step 2. Use special features on this machine to embroider the belt piece and continuously connect each border design as follows:

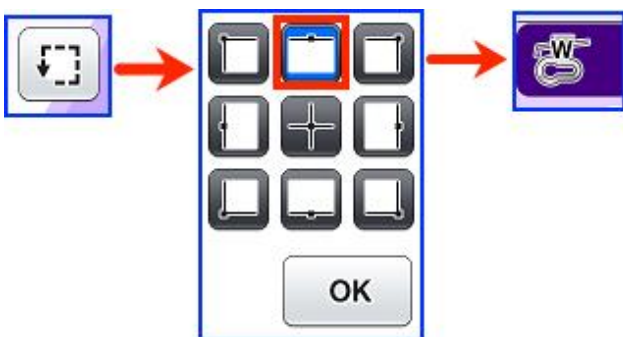
Hoop tear away stabilizer and embroider the basting outline. **Tip:** When you stitch a basting outline on thin stabilizer it may be necessary to bring the bobbin thread to the top to help form the stitch. Advance to the first stitch in the design, send the needle down and up, and then tug on the thread to bring the bobbin thread to the topside. Gently hold both thread tails for the first few stitches of the basting outline, and then stop, clip the tails, and continue with the embroidery.



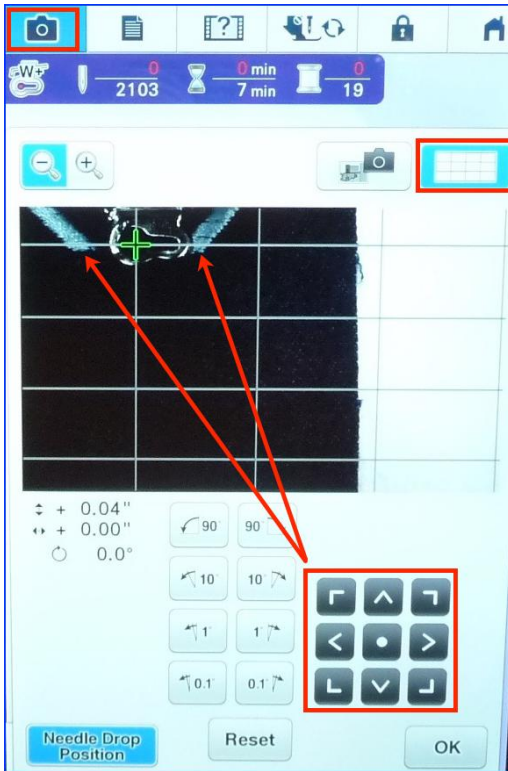
Exit the screen, return to the menu, and select the saved border design. Center the belt strip within the stitched basting outline, beginning approximately 1-inch from one end of the strip. Use the outline of the basting box to help you keep the strip perfectly straight. You can use the temporary tape or basting spray to secure your strip to the stabilizer. Embroider the saved border design along center of strip. **Tip:** Select the icon for continuous embroidery and the machine will stitch without stopping after each repeat motif.



Remove piece from hoop and tear away excess stabilizer. Hoop a new piece of stabilizer and stitch basting as you did before. Exit the screen and select saved border design. Temporarily position the next portion of the strip within the basting outline so that the bottom center of the previous border design is near the top of the basting box, centering the strip as you did before. Proceed to Embroidery > touch Trial key > touch Top Center position > touch OK. To accurately align the next design, first touch the icon to turn on the LED pointer. This Droplight™ feature precisely shows the top center of the next design. When the droplight is aligned with the center point of the previously stitched design you can securely attach the strip to the stabilizer.



To fine-tune the position of the next border design, lower the presser foot, touch the camera icon in the upper left corner, and then select the option for gridlines. You will see a clear view of the exact point where the next border will begin. Align the design so it overlaps slightly and connects with the previous one, using the arrow keys as necessary to adjust. Embroider the next border design. Continue to align and stitch the entire belt piece using the method described above, embroidering enough motifs to fill the strip.



Step 3. Sew belt strips together using 1/2-inch seam, turn right side out and adjust as necessary when constructing jacket. Follow pattern instructions to complete jacket, choosing a standard or decorative style stitch for topstitching the collar and cuffs and any other style detail you choose to include. When topstitching with a decorative stitch such as the one featured on this jacket you will need to sew the decorative stitches prior to attaching it to the garment. Be sure to add removable stabilizer underneath. I used the exclusive Brother My Custom Stitch™ feature to create a small candlewicking style stitch to coordinate with the center border motif on the belt. Visit the Brother website to download a small candlewicking style stitch from the [Brothersews My Custom Stitch™](https://www.brothersews.com/MyCustomStitch/) Free design collection.



OPTIONS AND IDEAS:



It's easy to create designs for the yokes featured on this jacket using many different embroidery machine models. The featured embroidery motifs, Wrapped 08_01 (2.5" X 3") and Wrapped 08_03 (4.59" x 6.28") are multi-format designs. You'll find these designs featured as a border and yoke accent on the Chic Suede Wrap in my *Wrapped in Embroidery* book. This garment was shown on a previous episode of *It's Sew Easy TV*. [CLICK HERE](#) for more information on [Episode 602-3](#).

To stitch the yoke designs on other machine models simply mark the center point of your design as you would for standard embroidery, align with the center of your hoop, and then proceed to embroider on oversized sections of fabric. If your embroidery menu does not include built-in Utility Embroidery patterns you can choose to add lines of decorative stitches from the sewing side of your machine. Consider stitching ribbon or trim to the yokes for another decorative option. You can choose to add rhinestones or studs for additional embellishment. **Tip:** Continuous embroidery is a featured technique in [Wrapped in Embroidery](#). In the book you'll learn three different methods for stitching continuous and combined motifs on most any embroidery machine, including low tech and no tech solutions. These embroidery placement techniques will work for this project and many other embroidery design projects.

Decorative stitches from the sewing side of the machine can substitute for continuous embroidery on the belt. You can also consider selecting narrow border style designs such as those found on www.ibroidery.com, the Brother embroidery design download site.

Additional Resources:

- Visit the Brother web site at www.brother-usa.com for Free designs, project instructions, and more, including a helpful [Template Tutorial](#).
- Visit your local [Brother sewing machine dealer](#) for Brother Machines, the Brother PE Design software program, and special machine accessories featured on this show.
- Learn more about pattern #242 Rodeo Cowgirl Jacket at www.folkwear.com.
- Please visit me at my Sewing and Embroidery website, www.letsdosew.com for more tips, techniques, and downloads, including a **Free Tip sheet** for creating Custom Covered Buttons. You can sign up for updated sewing ideas and inspiration, project ideas, and more when you visit www.letsdosew.com.