

Season 1011.2

- Hemming Knits

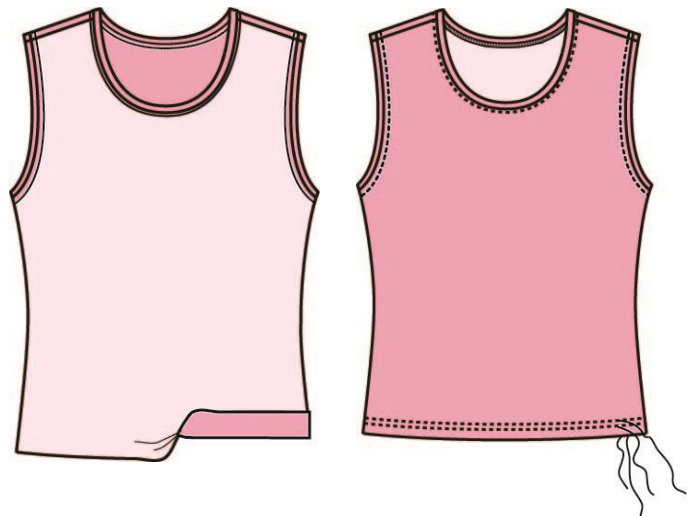
Fabric: All the fabrics I use on **It's Sew Easy TV** come from [Vogue Fabrics](#)
Patterns and Sewing Supplies: [The Angela Wolf Pattern Collection](#)



If you are looking for an easy garment to sew in an afternoon, consider a simple knit top! You have probably seen me wearing and sewing my [Ruched-T Pattern](#) and Delila tops. Simple tops with many variations and every one can be sewn in an afternoon.

Here is a tip for hemming knits:

- Press up the hem with a [tailor's clapper](#)
- From the right side of the top, use a twin needle with a stitch length of 3.5 to 4.0





Some of my favorite knit patterns:

[#AW1123 Ruched-T Pattern](#)

[#AW5314 Delila Pattern](#) -I am wearing one of the version in the green on the first page (launching February 2016)

[#AW1536 Rachel Twinset](#) (launching February 2016)



Use coupon code **ITSSEWEASY10** for 10% off patterns, tailor's clapper, Books, DVD's, and all sewing supplies at www.AngelaWolfPatterns.com

Refer to my [blog](#) for more sewing tips and tricks!

Cheers,

Angela

Join me ...  