

Couched Collar for Faux Suede Coat

Add creative couching to a collar for a stunning textured effect!



Presented by: Joanne Banko
www.letsgosew.com

Materials and supplies featured in this segment:

- Featured machine is the [Brother XV8550D Dream Machine2](#) with the included MuVit™ Digital Dual Feed System and Couching Foot for use with MuVit™ Digital Dual Feed System.
- Thread for couching – I used decorative embroidery thread.
- Medium weight yarn. I used Lion Brand Heartland Tweed 4 oz., size No.4 yarn.
- Coat pattern with large collar – featured pattern is New Look 6416 from Simplicity® Pattern Co.
- Fabric and notions as per pattern, including fusible interfacing such as fine fusible tricot or knitted bias type interfacing for collar.

Note: I used [Shannon Fabrics](#) Cuddle® Suede Fabric, (color - charcoal) for this coat. Visit my website, www.letsgosew.com and download a free **Faux Suede Fabric Tip Sheet** to help you sew this luxurious fabric.

A simple definition of couching is this - Placing trim on the fabric surface and anchoring it in place with stitches that secure trim to fabric. Couching can be easily added to accent collars, cuffs, or even an entire garment. The Brother Dual Feed foot is featured in this project. With the added couching accessory this helps feed both fabric and yarn smoothly at the same time. It's especially helpful for couching on the faux suede. You'll enjoy creating fabric surface embellishments using yarn and decorative cords with this easy to use, dual feed couching foot. Designed for use with the MuVit™ Dual Feed Attachment, it's ideal for couching on difficult fabrics. The included yarn threader helps feed your yarn into the couching foot with ease, and the included yarn guides help make this technique quick and easy. [Brother Accessory SA200](#) is an option for some additional machine models. **Note:** Visit www.letsgosew.com to learn about other accessory options you can use for couching.

Basic Instructions for creating the couched collar:

Step 1. Cut collars using pattern and apply interfacing to the wrong side. Prepare a few remnant pieces of fabric with interfacing for testing stitches. Determine area where main portion of top-side of collar rolls to the right side and mark so you can be sure to begin stitching in this area. I used a pin and removed it just before stitching. Some patterns have the “roll line” of the collar marked but you can usually see where the collar straightens out or narrows on pattern piece.



Tip: Read the manual for detailed instructions on setting up the couching attachment. I like to reel off small amounts at a time to keep yarn from getting tangled. Watch the yarn to be sure it is reeling off freely as you stitch.

Step 2. Feed yarn into cording hole and test various stitches on fabric remnants. Experiment with different widths and lengths from allowable stitches, selecting a stitch that travels from right to left. Make sure yarn is anchored properly and fabric stays smooth. Adjust dual feed settings if necessary. Suitable stitches include a serpentine stitch, feather stitch, rick rack stitch, and a zigzag. I used stitch No.2-13.

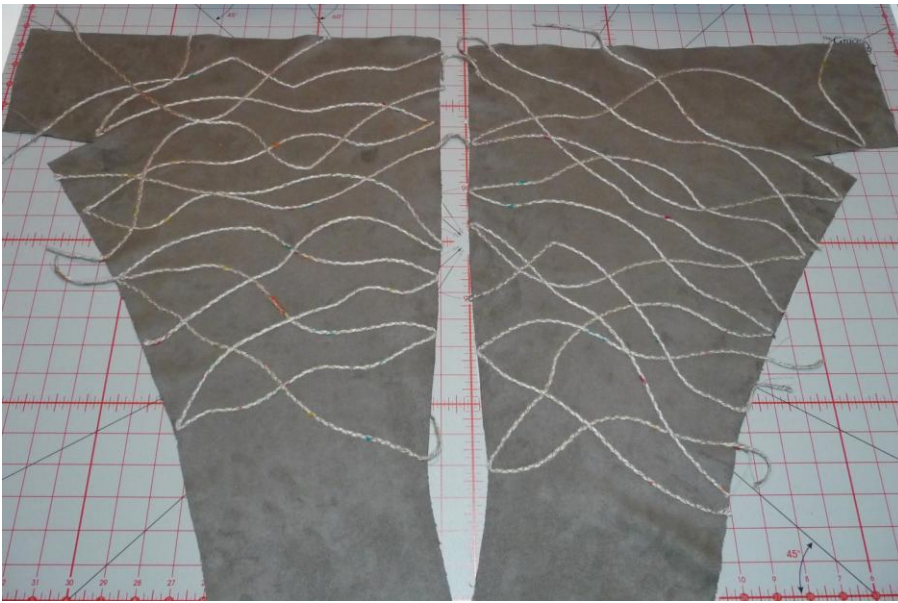


Tip: Try different stitches and thread combinations until you find something you like. Keep in mind that a high contrast thread makes the stitch more prominent, while thread that blends with the yarn makes the yarn more prominent.

Step 3. When you're happy with your test results couch across the collar from end to end meandering and filling in the area as desired. When you reach each end you can pivot to continue or drag the yarn away from the fabric and begin again.



Feel free to mark off specific stitching lines if you want a more controlled couched effect. I chose a diagonal route and stitched in a free form style.



Tip: If you stay with a free form style of stitching you won't have to be concerned with making the two collars match.

Step 4. Lightly press the collars when finished and trim excess tails of thread. Complete your garment using the pattern directions. Enjoy!



Let's stay in touch!

I'd love to help you make the most of your sewing machine!

[CLICK HERE](#) to add your name to the letsgosew.com email list for timely tips, tricks, and sewing news.

You'll be the first to know about new blog posts and my weekly preview of the online It's Sew Easy TV show.

Additional Resources:

- Visit me at my Sewing and Embroidery website www.letsgosew.com. You'll find online lessons, videos, free downloads, and lots of sewing fun at letsgosew.com!
- Find me on Facebook www.facebook.com/letsgosew/
- Be sure to visit the [Official Brother Blog](#) for more ideas, projects, and information, including an additional project featuring couched accents on a monogrammed tech cover.

Happy Sewing!

Joanne