

# Burrito Method

By Lindsey Rae Marsh  
of Sew To Grow

Pattern used in filming is the Bespoke Blazer  
and can be purchased at:  
[www.sewtogrow.com.au/shop](http://www.sewtogrow.com.au/shop)

---

## Subject

Today we are going to learn how to sew the Burrito Method. No, I didn't coin this phrase, you may have even done this technique when sewing pillow cases, but today I am going to show you how to use this method on the inside of a blazer. This method is so fun to do and a great skill to add to your sewing repertoire .

---

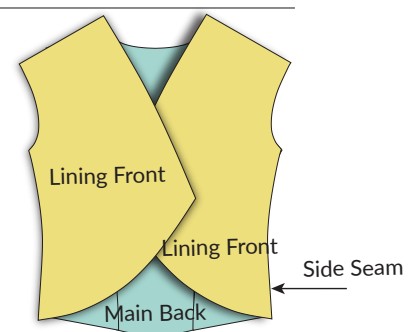
## Supplies

- You will need your garment sewn up to the point where you are about to attach the side seams as well as Pins and Scissors.
- I also like to suggest that for your first project that you choose something that has a clear right and wrong side of the fabric. I know that choosing something like a solid linen can get quite confusing on your first try at this technique.
- I am using a stable quilting cotton with a clear right and wrong side.
- I've also gone ahead and pre hemmed my back piece by 1/2". However, if you were doing this on the bodice of a dress that was going to be sewn into a waisted skirt, then you wouldn't need to pre hem as I have done here.

---

## Laying Out Project to Align Side Seams

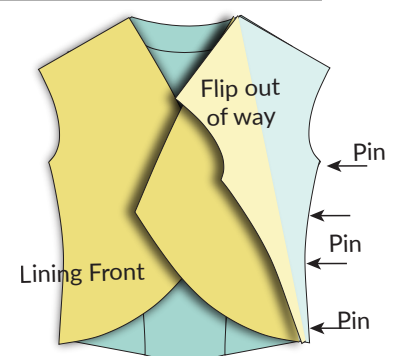
- Start with the right side of the back facing up towards you.
- Next, Place the front pieces right sides together with the back matching the side seams.
- Once everything is lined up, gently pull away the Front lining.



---

## Pinning Side Seam

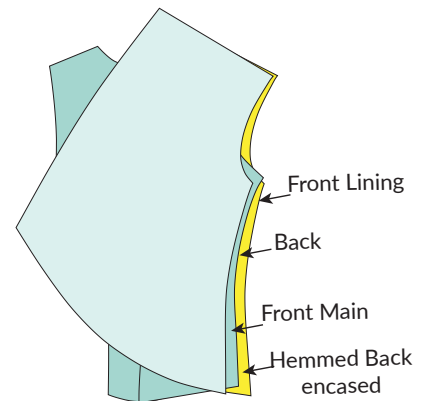
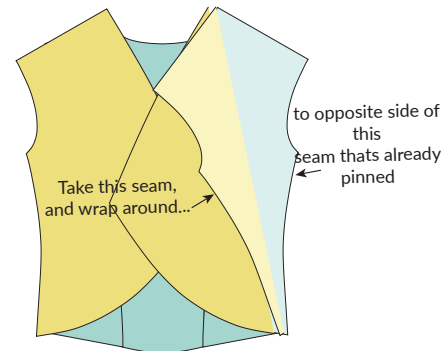
- Start by pinning at the top and then pin at the bottom. I like to make sure the seam is out of the way. This will make for a nicer finish.
- Then pin in the middle, then middle, middle, middle.
- Once pinned, we are going to go to the machine and sew a 3/8" seam at about a 4.0 stitch length to baste together.
- Start under the arm Stop at the bottom exactly where your seam ends and back stitch.



---

## Pinning the Burrito

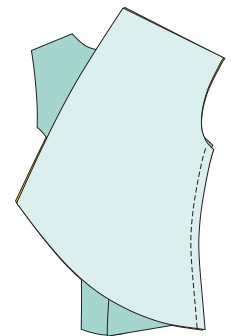
- Start by placing the jacket back on your table as you did previously, with the back facing right side up and the Front right sides together with the back as I have here.
- Take a pin and place it in the middle on the lining of the front.
- Next, take another pin and place it in the middle, but on the wrong side of the back.
- These two pins have to kiss. What I mean is that this pin on the lining needs to match up to the other pin on the wrong side of the back.
- Grab the top and bottom of the lining.
- Go down and around the bottom seam and back up the other side until the pins are touching like sew.
- Everything is lying flat. Grab the lining and go down and around the bottom seam and back up the other side of the back until the pins meet. You are essentially just sandwiching both sides of the back side seam.
- Straighten everything out and pin together.



---

## Sewing the Burrito

- Set your machine to a 2.5 stitch length and sew over your previous stitching. Taking out your pins as you sew.
- (while sewing talk about why I pin with pins facing out if there is time) Reverse when you get to the end.
- Once sewn, trim the bulk of the end and then turn right side out.
- Go ahead and give this a press and then repeat for the opposite side.



---

## Sewing the Burrito

- After the burrito method, you can finish your project by attaching sleeves or you could simply leave it sleeveless and bind the edges with bias binding.
- This Blazer can be made in a variety of fabrics of the same Jacket made with different fabrics: Velvet for something dressy, Linen for casual corporate, Rayon for light and breezy, or quilting cotton to show off some really fun prints. The possibilities really are endless!
- I hope you really enjoyed upping your sewing skills today and are excited to try the burrito method on your next project.