

## ISE 513-3 Attaching Button to Jacket

Join me



and be sure to sign up on my blog for sewing & fitting tips along with class updates.

xoxo Angela 😊



**Fabric:** All the fabrics I use on **It's Sew Easy TV** come from [Vogue Fabrics](#)

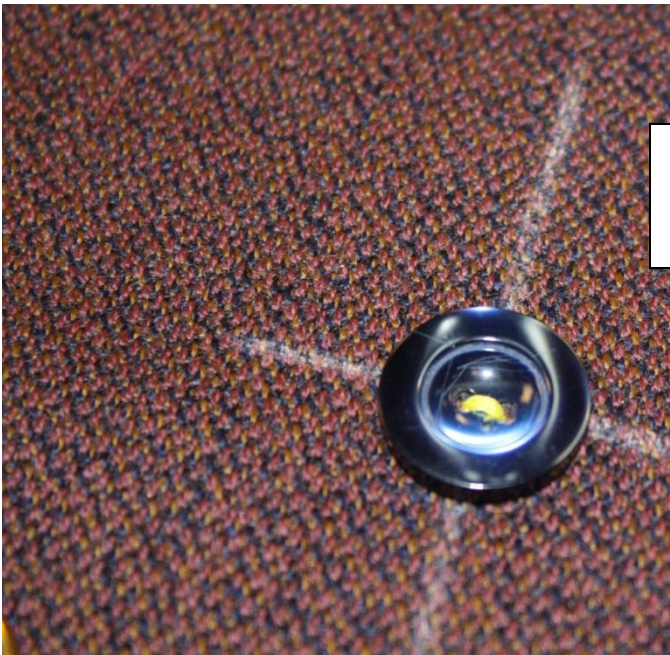
**Jacket Patterns and Sewing Supplies:** [The Angela Wolf Pattern Collection](#)



- Mark the placement for the buttons.

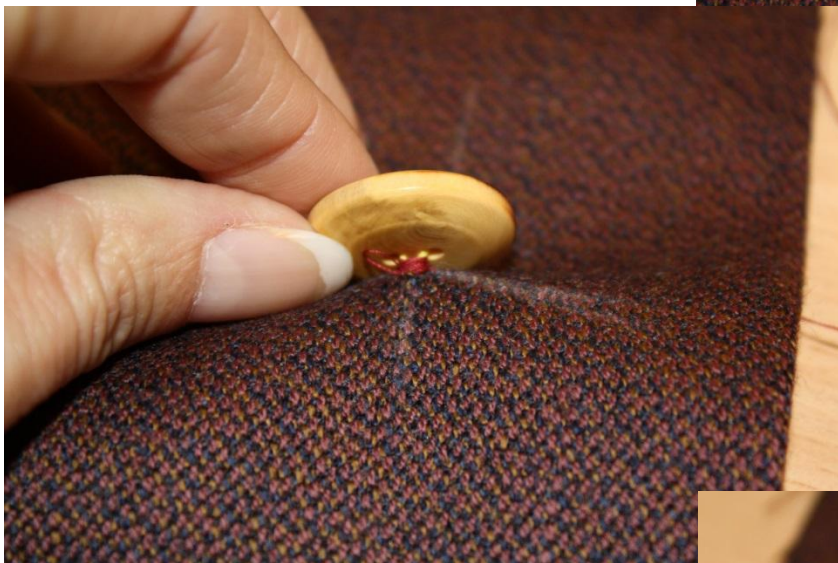


- If you want to use your sewing machine, use the button sewing stitch.



- Start you stitching slowly! In fact, I usually use the hand wheel to start – just to make sure the needle will go through each button hole.

- If your machine includes a button foot with shank, use that shank to create a base for the button, unless you are attaching button to a blouse or shirt where a shank is not needed.



- If you button looks like this, you need to handstitch the button in place.

