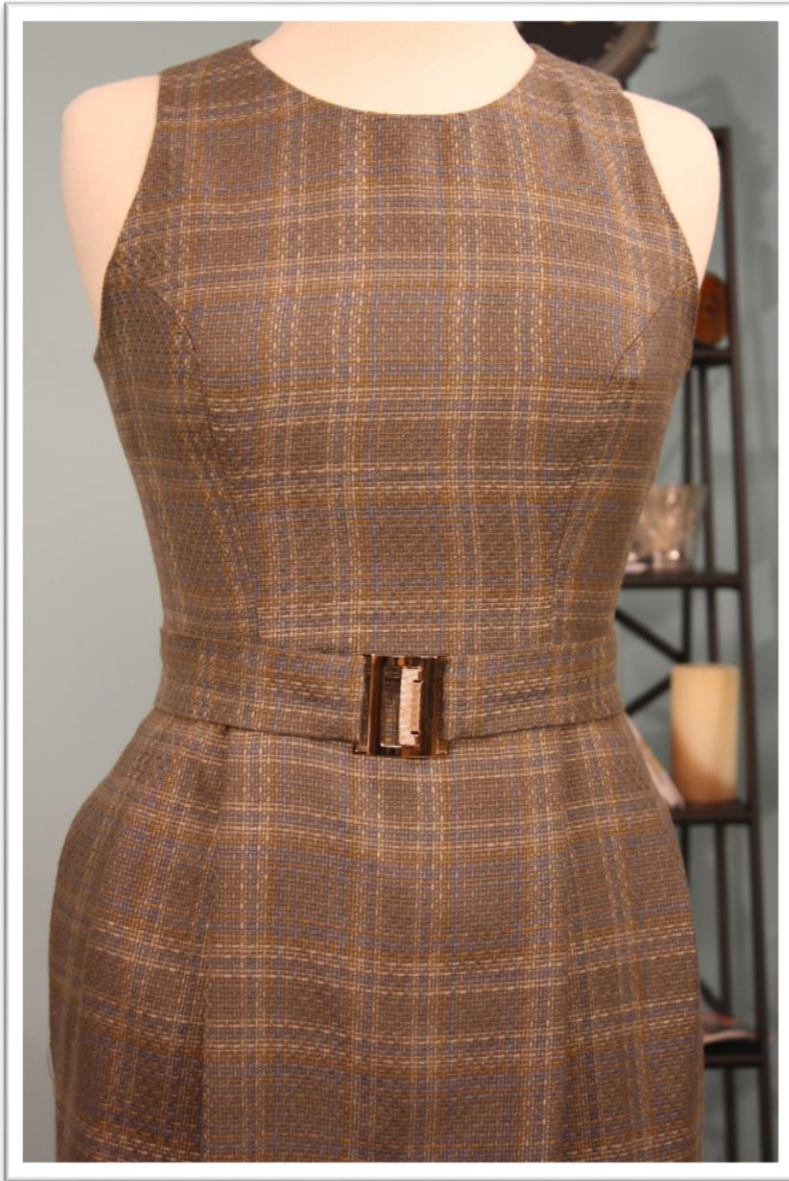


Season 600 - The Little Black Dress

- **Attaching Bodice to the Skirt**

Fabric: All the fabrics I use on **It's Sew Easy TV** come from [Vogue Fabrics](#)
Patterns and Sewing Supplies: [The Angela Wolf Pattern Collection](#)



When attaching the skirt of the dress to the bodice there are a few things to watch for:

- Make sure all seams and darts are pressed the right direction.
- If a belt or waist embellishment is added, do so at the center back seam before attaching the zipper.
- An easy way to cover up the waist seam is to press the seam up into the bodice, use lining as facing and attach the lining to the waist seam.

Refer to my [blog](#) for more sewing tip and tricks!

Cheers,

Angela

Use coupon code **ITSSEWEASY10** for 10% off everything at
www.AngelaWolfPatterns.com

Join me ...       