

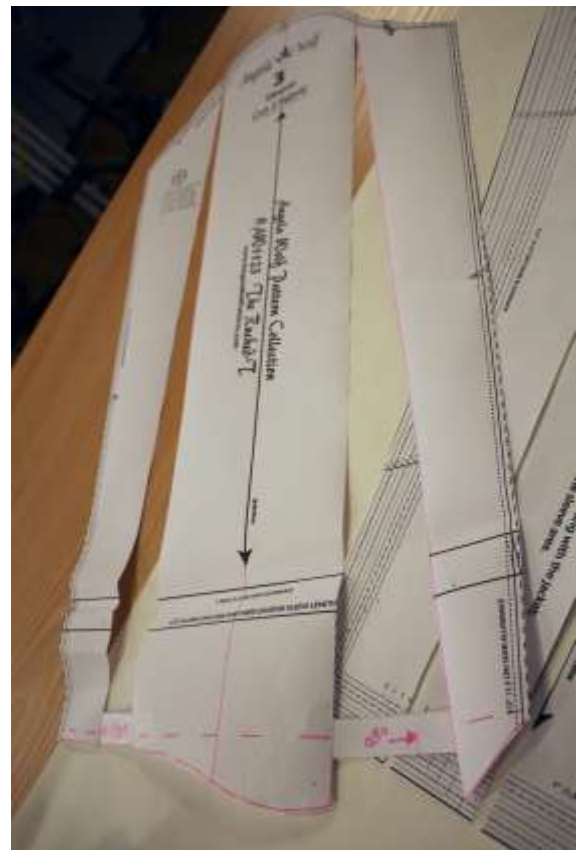
Episode 904 - 2

- Bishop Sleeves

Fabric: All the fabrics I use on **It's Sew Easy TV** come from [Vogue Fabrics](#)
Patterns and Sewing Supplies: [The Angela Wolf Pattern Collection](#)



Changing a sleeve style is an easy way to alter any basic pattern. Here I started with my [Ruched-T pattern \(available in sizes XXS – 5X\)](#). I kept the body shape the same as the pattern and just altered the sleeve.



Sleeve pattern:

- Draw 2 or more parallel lines from the hemline to the sleeve cap
- Slash the line, but not through the sleeve cap
- Spread the pattern apart as shown
- Change the curve of the hemline

Note: Spread the pattern as much as you want, the wider the spread the more fabric and visa versus.

Join me ... 



I did the same alteration with a jacket sleeve:

- Altered the sleeve pattern to allow for more fabric at the wrist and then adding a cuff

Decorate the sleeve cuff with embroidery and trim:

- Start by drawing lines with for the embroidery and trims with fabric chalk.
- Add Interfacing to the back of the cuff and stabilizer if needed.



Join me ...



Lay out the trim to determine the best locations.

Start embroidering over each chalk line and then add trim.



Join me ...





Use coupon code **ITSSEWEASY10** for 10% off everything at
www.AngelaWolfPatterns.com

Refer to my blog for more sewing tip and tricks!

Join me ...       